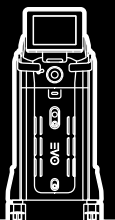


Quanta System
LASER IN OUR DNA

Litho EVO

HOLMIUM LASER





Litho EVO

35W HOLMIUM:YAG
FOR ADVANCED LITHOTRIPSY

The new **Litho EVO** device represents the evolution of Quanta System low power **Holmium** line (*Litho*), improving the performances of its predecessors and adding some of the innovations recently introduced with our high power Holmium line.

Litho EVO is designed for enhanced versatility in **lithotripsy** and **soft tissue surgery**. The user has the possibility to be guided in the selection of emission parameters, to switch immediately between different settings thanks to the **double footswitch** and to save his favourite settings.

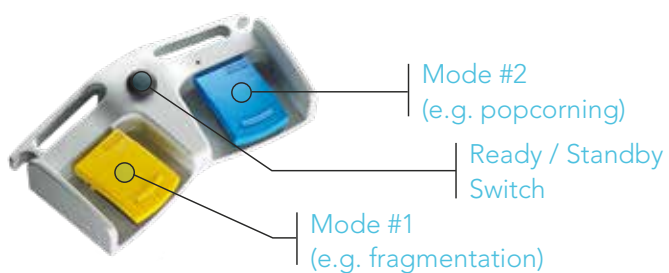
The use of the **MasterPULSE** and **Vapor Tunnel™** technologies further empowers the surgeon with advanced treatment tools.

General Overview

- ✓ Effective Lithotripsy
- ✓ Vapor Tunnel™ Technology
- ✓ High Power and Frequency also with Small Fibers
- ✓ MasterPULSE
- ✓ Reduced Depth of Penetration (0.3-0.4 mm)
- ✓ Soft Tissue Surgery
- ✓ Quick ROI
- ✓ High Versatility

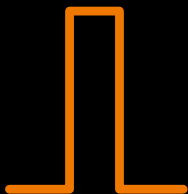


Double Footswitch



The double footswitch enables **immediate** switch from one emission mode to another, with **complete customization** of pedal-mode association. No bothersome interruptions are needed for settings readjustment.

Fragmentation



**SHORT
PULSE**



HIGH PULSE ENERGY

Up to 5 J, for superior pulse energy range



TREAT ALSO THE HARDEST STONES

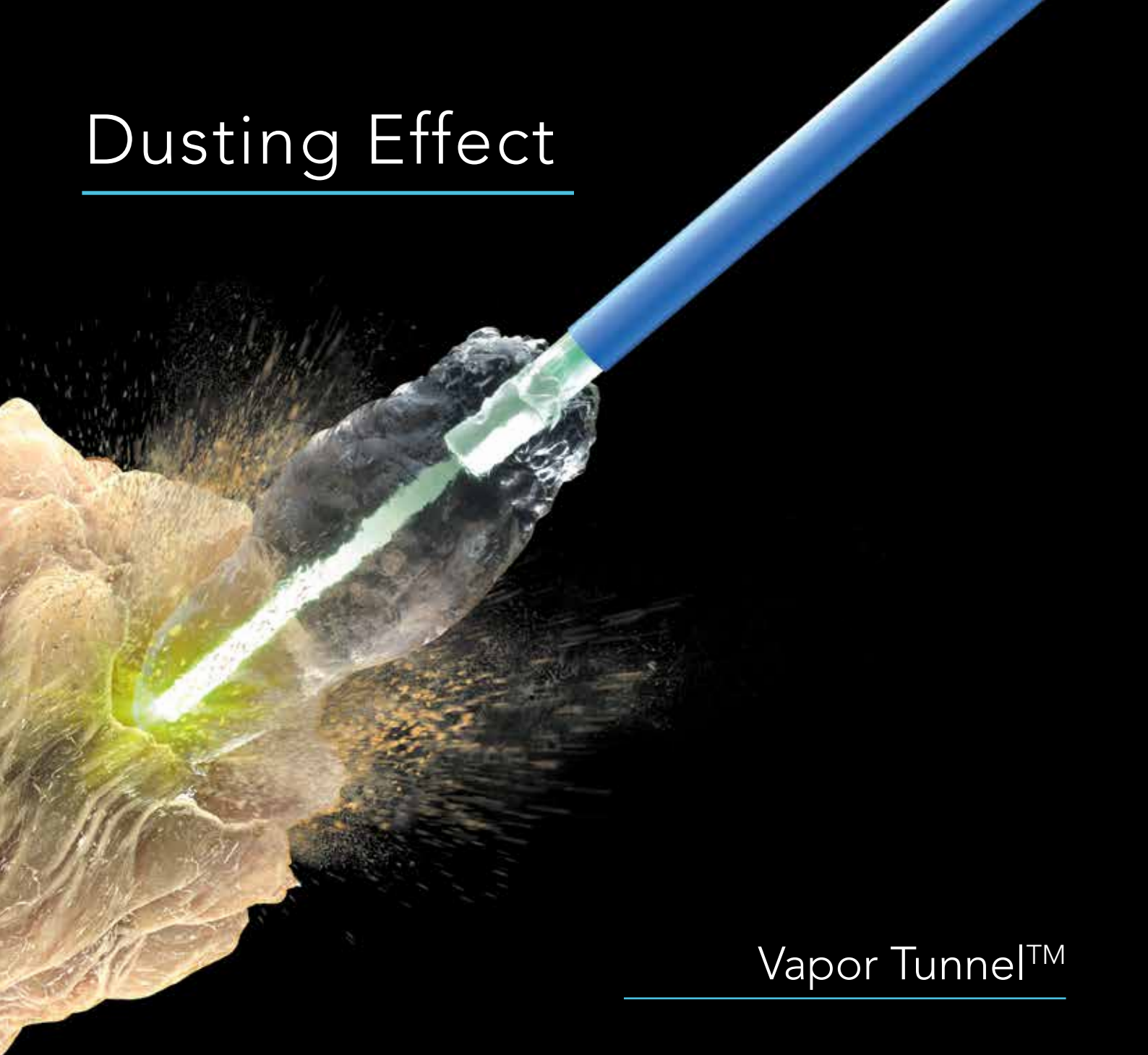
Greater pulse energy allows to break harder stones



COLLECTION BASKET NEEDED

Retrieve stone pieces upon fragmentation

Dusting Effect



Vapor Tunnel™

LONG PULSE WIDTH

Up to 1100 μ s, for smooth ablation



LIMITED RETROPULSION

Easy ablation with no need to chase stone



NO NEED FOR BASKET

The obtained fine dust obviates the retrieval phase



Beyond standard low power Holmium

DOUBLE
FOOTSWITCH



HIGH PERFORMANCES
EVEN WITH SMALL FIBERS



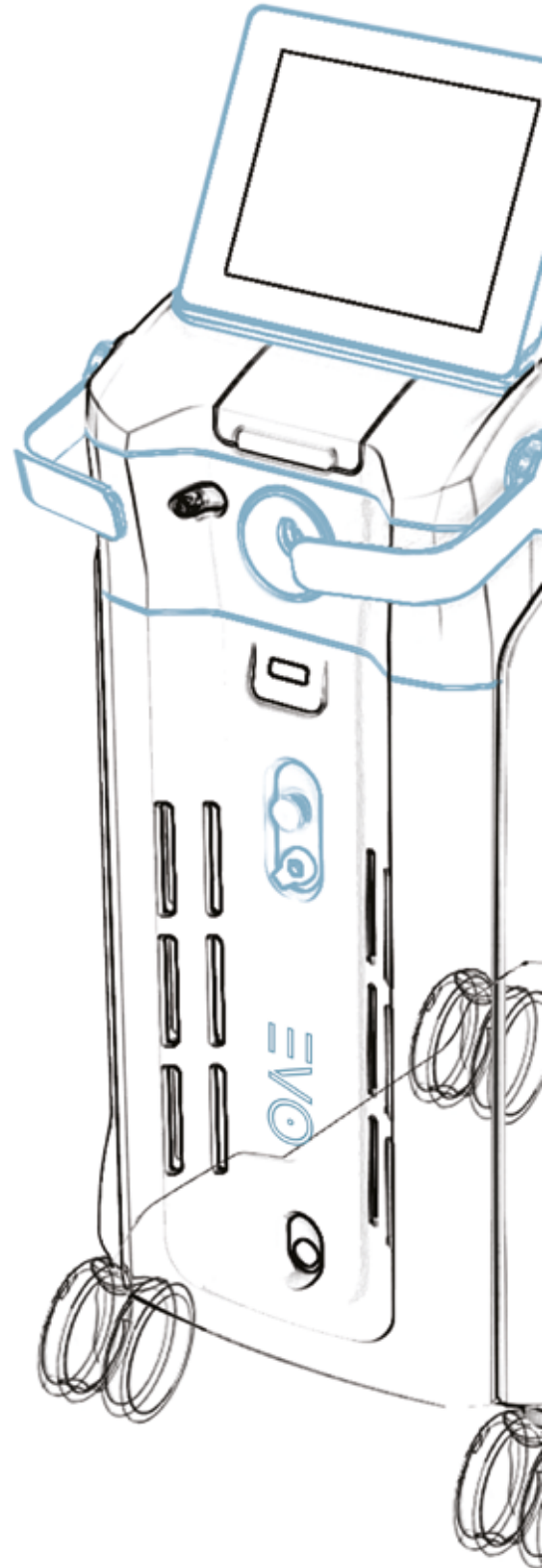
SAVING OF
SETTINGS



MASTERPULSE
(7 steps pulse duration adjustment)



GUIDE SETTINGS SELECTION
(not only for urology)



Reliability



1000+

INSTALLATIONS WORLDWIDE

25+

COUNTRIES WHERE
INSTALLED

200+

DOCTORS TRAINED AT OUR
REFERENCE CENTERS

2008

INTRODUCTION OF
THE FIRST LITHO MODEL

Fibers

Litho EVO device can be operated with a large range of fibers, depending on the application, flexibility and settings required.



STANDARD FIBERS

For general use in stone and soft tissue treatments.
High power emission already with small fibers!



BALL TIP FIBERS

Strongly simplify the insertion in already bent scopes



GASTRO FIBERS

Specifically designed for the fragmentation of gallstones



FIBER RECOGNITION

Litho EVO automatically adjusts emission settings based on the connected fiber diameter



AVAILABLE DIAMETERS

200, 272, 365, 550, 800 and 1000 μm



REUSABILITY

All fibers are available both as disposable and reusable (except Ball Tip model)



CLEANING

Reusable fibers can be sterilized by Sterrad[®] and steam sterilization

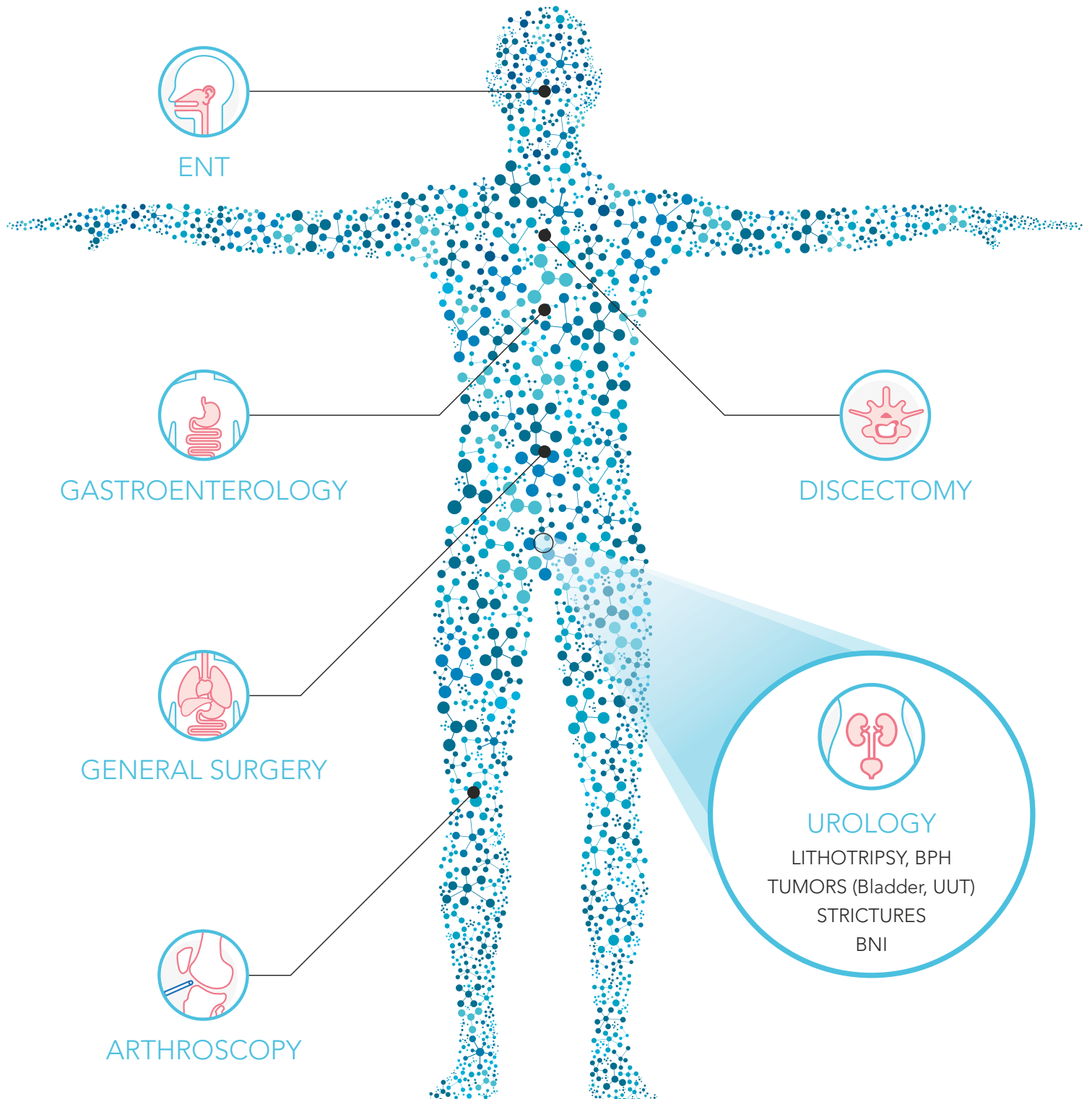


STERILIZATION TRAY

A dedicated fiber and tool sterilization tray is available

Applications

Litho EVO can be used to perform incision, excision, resection, ablation, vaporization, coagulation and hemostasis of soft tissue and in lithotripsy of stones in various medical specialties, including:



Technical Specifications

Average power	35 W
Repetition rate	3 ÷ 30 Hz
Energy per pulse	0,1 ÷ 5 J
Wavelength	2,1 µm
Pulse duration	50 ÷ 1100 µs
Beam delivery	Wide range of flexible silica fibers
Recognition fiber	RFID System
Activation	Double Footswitch
Aiming beam	532 nm, (adjustable <5mW) - Class 3R
Electrical requirements	220-230 Vac; 10 A; 50/60 Hz 100/115 Vac; 20 A; 50/60 Hz
Cooling	Closed water-air cooling circuit
Operating temperature	10°C ÷ 30°C
Dimensions and weight	45.2 cm (W) x 85.2 cm (D) x 93.5 cm (H) (display closed) - 95 kg

*This brochure is not intended for the U.S. market.
Certain Intended Uses/Configurations/Models/Accessories are not cleared for U.S.*

VISIBLE AND INVISIBLE LASER RADIATION

Avoid eye skin exposure to direct or scattered radiation

Laser product: Class 4

Aiming beam: Class 3R



CAUTION - Laser radiation

CE
0123

Note: National local authorities may put restrictions to the parameters indicated in the table in the previous page, or may limit or remove certain intended uses. Specifications are subject to change without notice.

Quanta System products are manufactured according to the International standards and have been cleared by the most important International notified bodies.

The Company is UNI EN ISO 9001:2015 and EN ISO 13485:2016 certified. Quanta System S.p.A. was founded in 1985 and belongs to the El. En. Group (a public company listed in the Star segment of the Italian Stock Exchange) since January 2004.

The company, divided into three business units (medical, scientific and industrial) is specialized in manufacturing of laser and opto-electronic devices.

Quanta System
LASER IN OUR DNA

